



# UNITING TO INSPIRE CHANGE AND BUILD THRIVING COMMUNITIES

LIVE UNITED







# GIVE ADVOCATE VOLUNTEER

LIVE UNITED



Every financial gift made to United Way of the Lakeshore in 2017 was put to work right here in Muskegon, Newaygo, and Oceana Counties. **All funds raised supported 57 programs** that were reviewed by local volunteers to ensure each met quality standards for programming, governance, finance, and capacity.

By **LIVING UNITED**, each individual donor was able to give a one-time gift with confidence that the contribution would make a direct impact on many lives in our local community.



Long-lasting change does not happen simply through the funding of services. **Thank you to our United Way volunteers for engaging local, state, and federal lawmakers in securing needed supports for people across our Lakeshore communities.**

Advocacy efforts helped to ensure \$900,000 in statewide 2-1-1 funding. State lawmakers also boosted eligibility for childcare vouchers for working families. Congress reauthorized the Earned Income Tax Credit and continued funding for Afterschool and Volunteer Income Tax Assistance (VITA) programs that help our ALICE families.

Our volunteers sent postcards to Congress urging reauthorization of the Children's Health Insurance Program — Congress extended CHIP for ten years! Local leaders authorized funding for senior programs, and recognized volunteer service.



United Way of the Lakeshore's **Volunteer Center connects health and human service organizations with the time and talent of interested volunteers.** Our online database, Get Connected, allows us to provide valuable human resources to nonprofit agencies and events.

**Day of Caring sent 400 volunteers** to 15 different sites to assist military families and veterans with home projects, clean up parks and museums dedicated to our veterans and armed services, and to put together kits of supplies for classrooms and energy saving materials for homeowners.

**67 Retired Senior Volunteer Program members also had unique opportunities to serve with their peers.** **United After Work** keeps our supporters LIVING UNITED after leaving the workplace by joining our efforts to help working families meet their basic needs.





**ALICE**

**ASSET LIMITED, INCOME CONSTRAINED, EMPLOYED**

Uniting to inspire **change** and build **thriving communities**.

**10,000 more working families meet their basic needs by 2025**

### Education

Building an educated workforce.

- ♦ School Readiness
- ♦ On Track Math & Reading
- ♦ Career Awareness
- ♦ On Time Graduation
- ♦ Post High School Success

### Income

People have long-term self-sufficiency.

- ♦ Stable Employment
- ♦ Established Savings
- ♦ Housing Stability
- ♦ Manageable Expenses  
Childcare, Transportation, Emergency Loans

### Health

Healthy & safe individuals & families.

- ♦ Kids Have a Healthy Start
- ♦ Access to Care & Counseling
- ♦ Safe & Caring Home & Community
- ♦ Good Nutrition & Active Lifestyle



## ACCESS TO RESOURCES

- The 2-1-1 program answered **23,151 assistance needs**.
- CALL 2-1-1 served as the **statewide pilot site** for the new state integrated service delivery portal, bringing access to local resources to people's "fingertips".
- The Muskegon County Employers Resource Network, which has a **success coach and emergency loan program on site at Muskegon County employers** including CWC Textron, Eagle Alloy, Harbor Hospice, Port City Group, Wesco, GHSP, and others, provided assistance for 345 employees in need.

## DEVELOPING SOLUTIONS

- We continue to use our **Agenda for Change** to inform the way we invest donor dollars to improve lives.
- A new partnership with Mission for Area People provided **transportation assistance** for working families based on individual needs.
- Affordable, available, quality child care is critical for ALICE families. A pilot program funded in 2017 through Arbor Circle's Great Start to Quality Western Resource Center gave out **58 mini-grants for childcare providers**, to assist them in meeting licensure requirements or to provide improvements needed to stay in business.
- **Workforce Stability Trainings** are being offered in each county through the Michigan Team ERN.



**40%+ of households in our community struggle to meet basic living expenses.**

**Bold Goal:** 10,000 more working families meet their basic needs by 2025 Learn more: [unitedwaylakeshore.org/alice](http://unitedwaylakeshore.org/alice)



# BUILDING AN EDUCATED WORKFORCE

**\$672,690 INVESTMENT**

**EDUCATION**

United Way funded community programs and initiatives in 2017 that focus on long-term educational success.

**83%** OF PRE-SCHOOLERS AND  
EARLY ELEMENTARY STUDENTS

demonstrated improved literacy through one on one reading and skill building sessions with Americorps volunteers.

**2,600** CHILDREN UNDER  
5 YEARS OLD

are enrolled to receive free monthly home delivery of age appropriate books. The Dolly Parton Imagination Library continues to expand throughout our communities.

**1,000<sup>+</sup>** YOUTH

benefit during the school year and summer from out-of-school time programs, where they are well-supervised in daily activities that include reading, science, technology & math (STEM) skills training, development, and leadership development.

**91%** OF TEEN  
PARENTS

in a teen parenting program were enrolled in an educational setting.

**4,512** HOURS OF  
COMMUNITY SERVICE

were provided by youth in Muskegon, Newaygo and Oceana counties, providing learning and growth opportunities.

**125** LOCAL TEENS

acquired employability skills for future career success while serving at area nonprofits, through a partnership with DTE and MI Works in our Summer Youth Employment Program.

**10** NEW PICNIC  
TABLES

and 1 pavillion were built by Newaygo Day of Caring volunteers for a park that hosts summer educational/recreational activities.

**60%** OF OCEANA HIGH SCHOOL  
SOPHOMORES, JUNIORS & SENIORS

participated in pre-college credit experiences.

Preparing our littlest learners for success and supporting all students leads to brighter futures. Learn more: [unitedwaylakeshore.org/education](http://unitedwaylakeshore.org/education)





# INSTILLING LONG-TERM SELF-SUFFICIENCY

**\$385,080 INVESTMENT**



**INCOME**

United Way supports and partners with programs that not only help in times of crisis, but also work to put families on a path to financial sustainability:

**628** INDIVIDUALS

received help with money management through education and financial coaching.

**17,552** FINANCIAL NEEDS

were met for families needing assistance with food, utilities, and other hardships.

**154** WOMEN

and 144 children obtained safe shelter and assistance in accessing resources and becoming self-sufficient.

**1,040** INDIVIDUALS

received preparedness education, increasing their resiliency.

**78%** OF HIGH NEEDS  
RESIDENTS

have successfully resided in supportive housing for 12 or more months.

**47** HOUSEHOLDS

received Permanent Supportive Housing Case Management services, with none discharged back into homelessness.

**2,537** ALICE TAX PAYERS

received income tax assistance resulting in well over \$3 million returned to our community.

**226** PERSONS WITH  
DISABILITIES

received transportation assistance so they could get to work and medical appointments.





# ENSURING HEALTHY & SAFE INDIVIDUALS AND FAMILIES

**\$345,244 INVESTMENT**

**HEALTH**

United Way supports programs that ensure healthy living for our lakeshore residents:

**1,050** CHILDREN AND ADULTS

benefited from counseling, advocacy and assistance in their times of need.

**17,715** ROUND-TRIP RIDES

for medical care were provided to 374 low income seniors.

**513** YOUTH

learned the importance of healthy meals and snacks, and how to prepare them.

**15** AMERICORPS SERVICE MEMBERS

are working on neighborhood development and blight elimination in our urban core this year. The Urban Safety Corps launched through a partnership between the State of Michigan, Muskegon County Land Bank, and United Way of the Lakeshore.

**100%** OF EXPECTANT MOMS

were strengthened through access to counseling, parenting education, and mediation services.

**150** BICYCLISTS

promoted healthy living by participating in our sixth annual RIDE UNITED bike event.

**70** SENIORS

received homeware and companionship, enriching their lives. 90% reported feeling better healthwise, more independent, and more connected to the community.

**86** FOSTER GRANDPARENT VOLUNTEERS

felt a sense of purpose and had a daily schedule, with 100% reporting a positive life impact from mentoring/tutoring students.

Good health begins with healthy individuals and a healthy community. Learn more: [unitedwaylakeshore.org/health](https://unitedwaylakeshore.org/health)



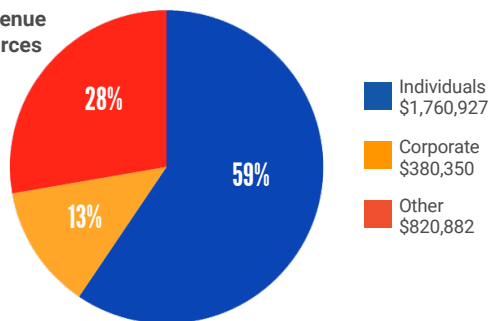


# 2017 CAMPAIGN

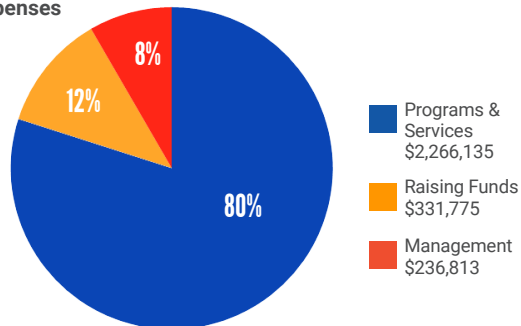
MORE THAN 7,000 DONORS RAISED \$2.3 MILLION

## FISCAL YEAR 2017

### Revenue Sources



### Expenses



|                               |             |
|-------------------------------|-------------|
| Total Support & Revenue       | \$2,962,159 |
| Program Expenses              | \$2,266,135 |
| Management & General Expenses | \$236,813   |
| Fundraising Expenses          | \$331,775   |
| End of Year Net Asset Balance | \$127,436   |

## 2017 BOARD OF DIRECTORS

**Mark Meyers, Chair, City of Norton Shores**  
**Mary Boyd, Vice-Chair, Mercy Health**  
**Derrick Smith, Treasurer, Inner City Christian Federation**  
**Walt Christophersen, Secretary, IBEW Local 275**  
 Sherri Campbell, Community Shores Bank  
 Laura Carpenter, Arconic  
 Bob Carter, Retired Muskegon Co. Sheriff  
 Jessica Chandler, Merrill Lynch  
 Ed Garner, MI Small Business Development Center  
 Lisa Hegenbart, Big Brothers Big Sisters  
 Rich Houtteman, Consumers Energy  
 Erik Jepsen, Kautex Textron, CWC Division  
 Fred Johnson, Muskegon Co. Public Defender  
 Erin Kuhn, WMSRD

Tyshon Massey, UAW Local 539  
 Gary Nelund, State Farm Insurance  
 Kendra Olsen, Retired Educator  
 Josh Reece, Parmenter O'Toole  
 Robert Ross, Muskegon Community College  
 Lisa Sabourin, Employers Association of West MI  
 Stewart Sanders, Newaygo Co. Register of Deeds  
 John Severson, MAISD Superintendent  
 Pat Shafer, Retired Chamber of Commerce  
 Sandy Siegel, Family Health Care, Inc.  
 Dave Sipka, Retired MAISD  
 Greg VanWoerkom, U.S. Rep. Huizenga's Office  
 Dwight Vines, Sun Chemical  
 Kay Williams, Hart Public Library

## 2017 CAMPAIGN CABINET

John Severson, Chair – MAISD  
 Penny Albortie, Retired Red Cross  
 Nancy Bierenga, Elan Realty Lakeshore  
 Brendan Bolhuis, Beacon Recycling  
 Shawn Buckner, Meijer  
 Bob Carter, Retired Muskegon County Sheriff  
 Walt Christophersen, IBEW Local 275  
 Mary Beth Hegedus, Great Lakes Dental  
 Christie Hill, Arconic  
 DJ Hilson, Muskegon County Prosecutor's Office  
 Jeanette Hoyer, Goodwill Industries of West MI  
 Rich Houtteman, Consumers Energy

Justin Jennings, Muskegon Public Schools  
 Erik Jepsen, Kautex Textron, CWC Division  
 Dawn Johnson, Muskegon Lakeshore Chamber  
 Cyndi Langlois, Muskegon Community College  
 Terry Leberfinger, ADAC  
 Kimberly Maguire, Mercy Health  
 Chelsea McEntaffer, Arconic  
 Kevin Mills, DTE  
 Gary Nelund, State Farm Insurance  
 Tom Reynolds, Mercy Health  
 Robert Ross, Muskegon Community College  
 Farrah Starr, Edward Jones

## 2017 LOANED EXECUTIVES

Debbie Anderson, Child Abuse Council  
 Steve Barnard, Muskegon County Waste Water  
 Angie Ecklund, Employers Association of West MI  
 Jennifer Grinnell, Life Circles  
 Nicole Johnson, 5/3 Bank  
 Andrea Jones, PNC Bank  
 Brian Kammerzell, Comerica Bank  
 Steve Keglovitz, Community Volunteer

Cyndi Langlois, Muskegon Community College  
 Jeff Malec, Malec Engineering Solutions  
 Lori O'Brien, Arconic, Retired  
 Matt Plaska, HealthWest  
 Ben Reider, Parmenter O'Toole  
 Donielle Routt, Nowak Machine Products  
 Farrah Starr, Edward Jones

**President/CEO** Christine Robere



# THANK YOU

## WORKPLACE CAMPAIGNS AND CORPORATE GIFTS

A J Vallier  
A. D. Bos Vending Services  
Access Health \*  
Acemco Incorporated  
Action Industrial Supply Co.  
ADAC Automotive  
AeroVision International \*\*  
AgeWell Services  
AGS Company Automatic Solution LLC  
Air Master Systems \*  
AmazonSmile Foundation  
American Red Cross \*\*\*  
Anderson Global/Anderson Express/IAM PM 2848  
Arbor Circle Corporation  
Arconic  
Area Community Service Employment  
Asphalt Paving, Inc.  
AT&T  
Auto Owners Insurance Co - Claim Branch \*  
Autocam Corporation  
Baker College of Muskegon  
Bank of America  
Barber Steel Foundry Corp. \*  
Bayer  
Beacon Recycling Inc \*  
Bellabay Realty \*\*  
Bennett Pump  
Best Buy  
Betten Chevrolet  
Big Brothers Big Sisters of Lakeshore \*\*\*  
Bissell  
Blue Cross Blue Shield of Michigan \*\*  
Bott & Spencer PC  
Braeburn Wealth Management \*\*\*  
Brickley DeLong, P.C. \*\*\*  
Brookhaven Medical Care  
Brooks EC Regional Corr. Fac/UAW 6000&AFSCME  
Brunswick Bowling & Billiards/IAM 2597  
Bucher Hydraulics  
Byrne Law Office PC  
Cannon Muskegon Corp. \*\*\*  
Carmen's Cafe  
Catholic Charities West Michigan \*\*  
Century A & E  
Century Foundry Inc.  
Chassis  
Chemtech Systems Inc. \*\*  
Child Abuse Council of Muskegon \*\*\*  
City of Fremont  
City of Muskegon/SEIU  
City of North Muskegon \*\*\*  
City of Norton Shores/Local 2559 IAFF  
Clifford Buck Construction  
Carpenters IOD, Laborers 365  
Cole's Quality Foods Inc IBT 406  
Comcast\*\*  
Comerica Bank \*\*  
Community Access Line of the Lakeshore \*\*\*  
Community enCompass  
Community Foundation for Muskegon County \*\*  
Community Shores Bank \*\*\*  
Conn Geneva & Robinson CPA \*\*  
Consumers Energy Fremont Area/UWUA 103 \*\*  
Consumers Energy/UWUA 103 \*\*  
Consumers Energy Foundation

Department of Human Services/UAW 6000  
Dethloff Insurance Agency  
Disability Network West Michigan \*\*\*  
District Health Department #10  
Dr. Pepper Snapple Group  
DTE Energy Company Retirees  
DTE Energy/ICWU-C70 \*\*\*  
Eagle Alloy Inc \*\*\*  
Eagle Aluminum Cast Products \*\*\*  
Eagle CNC Technologies \*  
Eagle Precision Cast Products \*\*\*  
élan Realty Lakeshore \*\*\*  
Every Woman's Place/Webster House \*\*\*  
Excel Propane - Fremont  
Excel Propane - Fruitport  
Excel Propane - Hart  
Family Financial Credit Union  
Federal Express  
Fifth Third Bank - Muskegon \*\*  
Fifth Third Bank - Newaygo  
First General Credit Union \*  
First Stone Realty \*\*\*  
Fleet Engineers Inc  
Fremont Area Community Foundation  
Fremont Insurance Company \*\*  
Fremont Public Schools/MEA  
Frontier/IBEW 1106  
Fruitport Charter Township  
Fruitport Community Schools/MEA  
GE Aviation Muskegon \*  
General Motors  
Gerber Federal Credit Union \*\*\*  
Gerber Foundation  
GHSP - Hart  
Ginman Tire Company  
Glick Fund  
Girl Scouts of Michigan Shore to Shore  
Glik's  
Goodwill Industries of West MI \*  
Gordon Food Service \*  
Grand Rapids Public Schools  
Grand Valley State University  
Grant Public Schools/MEA  
Graphics House Express  
Gray & Company/IBT 406 \*\*\*  
Great Lakes Dental Excellence \*  
Great Lakes Die Cast  
Great Lakes Energy A34  
Greenridge Realty \*\*  
H & S Companies Hendon & Slate, PC \*\*\*  
Hackley Community Care Center  
Hackley Public Library  
Harbor Hospice \*\*  
Harbor Light Credit Union  
Harbor Steel & Supply Co.  
Hart Public School District  
Hazekamp Meats/Premier Foods  
Hines Corporation  
Holton Public Schools/MEA \*\*  
Honeywell International \*  
Hooker DeJong Architects \*\*\*  
Hot Rod Harley-Davidson  
Huntington Bank Muskegon  
IBEW Local 275  
Illinois Tool Works (ITW)  
Independent Bank - White Cloud  
Independent Bank  
International Business Machines \*\*  
J & M Machine Products  
J Todd Hunt DDS PLC  
Jackson - Merkey Contractors Inc.  
JC Penney Company  
Jerviss-Fethke Insurance  
JP Morgan Chase & Company  
K L Industries, Inc./Ameriform  
Kaydon Corporation/IAM 2597

Kautex Textron, CWC Div/UAW 539 \*\*\*  
Kellogg's Corporate Citizenship Fund  
Kid's Food Basket Muskegon  
Knoll Inc.  
L-3 Communications/UAW 113&1279  
Lake Michigan Credit Union  
Laketon Township \*\*  
Legal Aid of Western Michigan \*\*\*  
LifeCircles \*\*  
Link 2 Launch Product Development \*  
Light Corporation  
Lorin Industries \*  
Louis Padnos Iron & Metal Co. \*\*\*  
Macy's West  
MAHLE  
Manpower  
Mary Free Bed Rehabilitation  
Mason - Oceana 911  
MasterTag  
McKenzie - Price Agency Inc  
MDOT-Muskegon  
Mediation & Restorative Services \*\*\*  
Meijer Fruitport/UFCW 951 \*  
Meijer North Muskegon/UFCW 951 \*  
Meijer Norton Shores/UFCW 951 \*  
Mercantile Bank of Michigan  
Mercy Health Lakeshore Campus \*  
Mercy Health Visiting Nurse Services  
Mercy Health/SEIU, NUHW & MNA \*  
Merrill Lynch  
Metal Technologies - RDI  
Michigan Spring & Stamping \*  
Michigan's Adventure  
Midstate Title Agency  
MLive Media Group/Muskegon Chronicle  
Modular Systems Inc  
Mona Shores Public Schools/MEA \*  
Montague Area Public Schools/MEA \*  
Muskegon Area ISD \*\*  
Muskegon Brake & Tire \*  
Muskegon Charter Township/AFSCME  
Muskegon County 60th District Court  
Muskegon County Admin & Board of Commissioners\*\*\*  
Muskegon County Circuit Court\*\*\*  
Muskegon County Convention & Visitors Bureau\*\*\*  
Muskegon County Department of Public Works  
Muskegon County Equalization Department\*  
Muskegon County HealthWest\*  
Muskegon County Human Resources  
Muskegon County Juvenile Transition Center  
Muskegon County Prosecutor's Office  
Muskegon County Public Health Department  
Muskegon County Register of Deeds Office\*\*  
Muskegon County Road Commission/Local 2151 UAW  
Muskegon County Treasurer's Office\*  
Muskegon County Wastewater Mgmt System  
Muskegon Community College/SEIU & MEA  
Muskegon Co-Op Federal Credit Union \*\*\*  
Muskegon Correctional Facility/UAW 6000  
Muskegon County Habitat for Humanity \*  
Muskegon Family Care  
Muskegon Lakeshore Chamber of Commerce \*\*\*  
Muskegon Public Schools/MEA  
Muskegon Area District Library \*  
Muskegon Area First \*\*\*  
Muskegon Surgical Associates  
Newaygo County  
Newaygo County Mental Health  
Newaygo County Regional Education Svc Agency  
Newaygo Public Schools/MEA  
Newkirk Electric Associates Inc.  
Nexes Realty Inc \*\*\*  
Nichols \*  
Noble Company  
North Muskegon Public Schools/MEA \*\*  
Northern Machine Tool/IAM 475 \*\*



Northshore Dental Associates  
 Northside Veterinary Hospital  
 Nowak Machined Products, Inc. \*\*\*  
 Nugent Sand Company \*\*\*  
 Oakridge Public Schools/MEA  
 Oceana County Council on Aging  
 Oceana County Medical Care Facility  
 Oceana Hispanic Center  
 O'Malley's Pest Control  
 Orchard View School District/MEA  
 O'Reilly Auto Parts - Muskegon  
 O'Reilly Auto Parts - Newaygo  
 O'Reilly Auto Parts - Oceana  
 Pacific Floor Care \*\*  
 Parmenter Law \*\*\*  
 Pentwater Public Schools/MEA \*  
 PNC Bank \*  
 Pratt & Whitney Component Solutions, Inc \*  
 President Ford Council BSA  
 Pressures & Pipes Inc.  
 Pro-Fab Production Fabricators, Inc.  
 Quality Tool & Stamping  
 Radiology Muskegon PLC \*\*  
 Ramos & Sons Body Shop  
 Ravenna Public Schools/MEA  
 Raymond James and Associates \*\*\*  
 RCP Marketing  
 Reeths Puffer Public Schools/MEA \*  
 Rehmann \*\*\*  
 Revel \*\*  
 Rudert Agency, LTD  
 SAF Holland/UAW 1703 \*  
 Salvation Army- Muskegon \*\*\*  
 Seaway Appliance Center Inc  
 Senior Resources of West Michigan \*\*\*  
 Servpro of Muskegon & Holland  
 Shack Enterprises, Inc.  
 Shelby Area District Library  
 Shelby Optimist Club  
 Shape Corporation  
 Shelby Public Schools/MEA  
 Shelby State Bank  
 Shellcast Inc  
 Shopko - Hart  
 Shoreline Metal Fabricators  
 Spartan Stores, Inc.  
 SpartanNash  
 Spectrum Health  
 Spectrum Health Gerber Memorial  
 SRS Fiberglass Products \*\*  
 State Farm Insurance - Jason Ryan Agency  
 State Farm Companies Foundation  
 State Farm Insurance  
 State of Michigan UAW 6000 & AFSCME  
 Steelcase  
 Sun Agency  
 Sun Chemical Corporation/USW 2-987 \*  
 Superior Monuments Co  
 Sytsema Funeral Home  
 T J Maxx  
 Target Corporation \*\*  
 The Arc Muskegon \*\*\*  
 The Challenge Machinery Co./USW Local 2-677  
 Therm-O-Disc, Inc.  
 Tower Laboratories - Montague \*\*  
 Trace Analytical Laboratories \*\*  
 Transnation Title Agency of Michigan \*\*  
 Tyler Sales Company Inc/Teamsters IBT 406 \*  
 United Parcel Service/IBT 406 \*\*\*  
 United Way of the Lakeshore \*\*\*

US Bank  
 Varnum LLP  
 Viking Tool & Engineering \*\*  
 Walgreen Drug Store  
 Walker, Fluke & Sheldon, PLC  
 Walmart #2238  
 Wal-Mart Supercenter #1791  
 Warner Norcross & Judd LLP \*\*\*  
 Wasserman's Flower & Gifts  
 Webb Chemical Service Corp \*\*\*  
 West MI Building & Construction Trades Council  
 West MI Comm. Mental Health Sys.- Hart  
 West MI Comm. Mental Health Sys.- Ludington  
 West Michigan Plumbers Fitters Local 174  
 West Mich Shoreline Regional Dvlprmt Comm. \*\*\*  
 West Michigan United Labor  
 West Shore Bank  
 West Shoreline Corr. Facility/UAW 6000 & AFSCME  
 White Agency \*\*\*  
 White Cloud Public Schools  
 Whitehall District Schools/MEA  
 WM Molding  
 Wolverine Worldwide  
 Wood Shed Bike Rentals  
 Wood Trucking Company  
 Younkens Dept. Store # 438 \*\*\*

\*\*\* Gold 60-100% Participation

\*\* Silver 40-59% Participation

\* Bronze 20-39% Participation

## TOP CAMPAIGNS

### MUSKEGON

Mercy Health  
 Arconic  
 Kautex Textron, CWC Division  
 Cannon Muskegon Corporation  
 Nichols  
 ADAC Automotive  
 Muskegon Area ISD  
 Consumers Energy/  
 Consumers Energy Foundation  
 Webb Chemical Service Corp.  
 Eagle Alloy Inc.  
 SAF Holland  
 Quality Tool & Stamping  
 Muskegon Community College  
 DTE/DTE Energy Foundation

### NEWAYGO

Gerber Federal Credit Union  
 Fremont Insurance Company  
 Bucher Hydraulics  
 Spectrum Health Gerber Memorial  
 Newaygo County  
 White Agency  
 Newaygo County Mental Health  
 Newaygo Co. Regional Education  
 Service Agency - NC RESA  
 Gerber Foundation  
 Fremont Area Comm. Foundation

### OCEANA

Gray & Company  
 GHSP - Hart  
 Barber Steel Foundry Corp.  
 Shelby State Bank - Shelby  
 Mercy Health Lakeshore Campus  
 Shelby Public Schools  
 Pentwater Public Schools  
 Excel Propane - Hart  
 Hart Public Library  
 Shelby Area District Library

## THANK YOU TO ALL OF OUR WORKPLACE DONORS!

While United Way of the Lakeshore has made every attempt to ensure the accuracy of this list, some workplaces may have been inadvertently missed. Please visit [www.unitedwaylakeshore.org/annual-report](http://www.unitedwaylakeshore.org/annual-report) for the most up-to-date listing, and be sure to let us know if you were inaccurately omitted.



# THANK YOU

## LEADERSHIP DONORS

### BARONS (\$5,000 - \$9,999)

David & Barbara Bloomfield  
Bob & Mary Boyd  
Bob & Donna Chandonnet  
David Gerdes & Carolyn Smith-Gerdes  
Martha Giacobassi  
Dan & Sheryl Kuznar  
Greg & Mary Loomis  
Kathy & Marvin Moore  
Ken & Amy Nowak  
Steve & Debbie Olsen  
Thomas U. & Frieda M. Olson  
David & Diane Punola  
Tadd & Nancy Seitz  
Roger & Jan Spoelman  
Dr. Remington & Ginny Sprague  
Bill & Cindi Stefl  
Robert & Corky Tuttle Fund  
Dr. Richard & Priscilla Wilcox

### AMBASSADORS (\$2,500 - \$4,999)

Adam & Melissa Bayne  
Bonnie Adamczak-Brown  
Jeff & Pam Alexander  
Gary & Suzanne Allore  
Jim & Teresa Baker  
Carol Brocci  
Dr. Donald & Nancy Crandall  
Linda Dunmore  
James & Linda Elwell  
Phil & Shelly Fortier  
Erik & Lora Gentzkow  
Shirley Gossett  
Dr. Gregory & Shelly Green  
Christie Hill  
Dr. Thomas & Heidi Hill  
Larry & Lari Hines  
Dr. J. Todd Hunt  
Erik & Nicole Jepsen  
Karen L. Kayes  
Wayne & Nancy Kohley  
Dr. Scott and Donna Lachniet  
Greg & Barbara Marczak  
Chris McGuigan & Gary Neal  
John & Betsy McIntyre  
Joseph Murphy  
Hester Newton  
Loyal & Allison Norkett  
Dan & Kendra Olsen  
David & Diane Punola  
Darryl & Connie Rabon  
Marvin & Christine Robere  
David & Wendy Sipka  
James & Lisa Smith  
Jim & Sheila Steffel  
Connie Taylor  
Peter Turner  
Gary VanderHeiden  
Michelle Warfle  
Michael Westra  
Judith Wilcox

### LEADERS (\$1,000 - \$2,499)

Tim & Mary Lou Achterhoff  
Don & Sharon Aley  
Kristine Anderson  
Montie Annis  
Fraser Baker  
Douglas Bard  
Jeffrey Barnes  
Kari Belanger  
Robin Belcourt  
Trisha Berus  
Sally Birkam  
David & Karen Booth  
Matthew & Judy Bosma  
Tim & Nancy Bott  
Drs. Wayne & Nancy Brenneman  
Karen Brittner  
Heather Brolick  
Jay Bryan  
Drs. Gerald Buchanan & Michelle Matheson  
John & Colleen Buckley  
Shawn & Brenda Buckner  
William & Karen Burkett  
Kelly Burns  
Rhonda Butterfield  
Ken & Sheryl Callow  
Robert & Laura Carpenter  
Michael & Peggy Carson  
Drs. Michael Cerminaro & Connie Verhagen  
Dr. Robert Christie  
Walter Christophersen  
Dr. Mark & Kristina Clark  
Dawn Cnossen  
Gail Cole  
Walt & Sarah Coleman  
Dr. Harvey & Peggy Comrie  
Mishelle Comstock  
Leon & Lisa Conklin  
Larry & Kristi Cooper  
Darrel & Melanie Copley  
Orville & Susan Crain  
Russell & Darla Crouse  
Lowell & Nell Dana  
Steve & Darleen Dangel  
Ken & Judy Danhof  
Tim & Tammy Davison  
Janet Day  
Ed DeJong & Diane VanWesep  
Mark & Julie DeJonge  
Donald & Susan DeLong  
Chris Dishong  
Steve & Judi Dix  
Doug Dorn  
Terri Lynn Draeger  
Melinda Draper  
Robert & Cathleen Dubault  
Allen Ely  
John Eridon  
Katherine Exton  
Donald & Sue Farmer  
Mark & Christine Fazakerley  
Douglas & Kimberly Fenbert  
Jami Fox  
Kristin & Simeon Frang  
Ronald Froese  
Martha Gabrielse  
David & Judy Gingras

Michael & Bonnie Gluhanich  
Dr. Gretchen Goltz  
John & Martha Gork  
Mary Anne Gorman  
Janet Graham  
Angela Green  
Brian Griffin  
Robert & Eileen Grunstra  
Kristoffer Hain  
Dr. James & Dr. Julie Hegedus  
Amy & Matt Heisser  
Mike & Laurie Helsen  
Renae Hesselink  
Leonard & Annette Hilton  
Spencer & Kara Hines  
Anne Hoekenga  
Mark Hollenbeck  
Linda Hood  
Corinn Hower  
Ed Hunt & Nancy McCarthy  
Thomas & Janice Hylland  
Steve & Deb Jackson  
Paul & Karen Jackson  
Dr. Joel & Kathleen Jarvis  
Charles E. Johnson  
Ronald & Dawn Johnson  
Rev. James Johnson  
Colleen Johnson  
Linda Juarez & Dirk Tepp  
Dr. Stephen & Andrea Kahn  
Scott & Chris Karaptian  
Philip & Judith Kell  
Chris Kelly  
Park & Kacey Kersman  
Katherine Kesteloot Scarbrough  
Donald & Lindsey Ketner  
Chad & Brooke Kieft-Anderson  
Garland & Laverne Kilgore  
Jeffrey King  
Dr. Michelle & Mr. Robert Klanke  
Anthony & Margaret Kolenic  
William & Lisa Kordupel  
Bill & Lisa Kordupel  
Amy Kozanecki  
Clyde & Penny Krepps  
Mary Susan & Nick Kroes  
Robert Krol  
Michael Kruzona  
Jeffrey & Kelly Kurburski  
Ed & Theresa Kuznar  
Michael Kuznar  
Pauline Lai  
Brian Lang  
Jerry & Alison Lang  
Alan & Cyndi Langlois  
David & Kerri Layman  
Terrance Leberfinger  
Joshua Lockard  
Bill & Kenna Loxterman  
Samuel Mancuso  
Donald Martines  
Steve Mark & Camille Jourden-Mark  
Tyshon & Kelly Briggs-Massey  
Paul Matz  
Steven & Caroline Mayberry  
Teresa McDaniel  
Dr. Janice McDonald

Will Meier  
 Gary & Wendy Merkey  
 Bjoern Meyer  
 Mark & Melissa Meyers  
 Stephanie Misciasci  
 Roger & Jane Missimer  
 Dr. John & Carolyn Mixer  
 Dan & Sharon Moody  
 Jon & Andrea Mount  
 Boyd & Brenda Mueller  
 Steven & Maureen Mussman  
 Kristi Nagengast  
 Steve & Mary Nagengast  
 Gary Nelund & Angela Wasserman-Nelund  
 Jonathan Newmyer  
 John Nichols  
 Jamie Noblett  
 Scott & Loretta O'Brien  
 Jon Oosting  
 Jim & Cindy Panici  
 K.P. Pelleran & Ken Mahoney  
 Frank Peterson  
 Dr. Veronica Petty & Steve Bawks  
 Mary Price  
 John & Michelle Pridnia  
 Matthew & Jill Pring  
 Kevin Rahrig & Lori Houghton-Rahrig  
 Drs. Timothy & Michelle Reilly  
 Cathy Renn-Bowers  
 Thomas & Julie Reynolds  
 Bruce & Mari Rice  
 Dr. Brian & Mary Rigo-Burdo  
 Bambi Rinehart  
 Dan & Sarah Rinsema-Sybenga  
 Lyle & Nancy Robbins  
 Jennifer Romanosky  
 Jon & Kathy Romkema  
 Kenneth & Lisa Rose  
 Robert G. & Cheryl A. Ross  
 James & Patricia Rudicil  
 Sally Rynberg  
 Thomas Schaub  
 John & Ruth Schrier  
 John & Deborah Schrier  
 William Sergakis  
 John & Elaine Severson  
 William & Toni Seyferth  
 Patricia Shafer  
 Raymond & Sharlene Shineldecker  
 Scott & Lisa Shlaffer  
 Derrick & Deirdra Smith  
 Steve & Carol Smythe  
 I. John & Kathleen Snider  
 Samara Spotts  
 Marjorie Stauffer  
 Ronald & Marilyn Steiner  
 Dr. Alan Steinman  
 Charles & April Stevens  
 Dr. Kevin & Therese Stone  
 Dr. Constance Strbich  
 Kimberly Suarez  
 Verne & Janet Sutherland  
 Debra Svensson  
 Donald & Leanne Swick  
 Jim & Ginny Sytsma  
 Bryce Tallant  
 Jim & Pat Teets

Ken & Tanya Uganski  
 Amy Upham  
 Sherri VanArendonk  
 Richard VandeKopple  
 Skyler Vaughn  
 Chad Veldhouse  
 Robert Vledder  
 Dan & Kathy Vollink  
 James & Cindy Vresics  
 JD & Linda Wallace  
 Paul & Amanda Watson  
 Michael Weessies  
 Joseph Weinert  
 Tracey Welsh  
 Dr. Andrew Wible  
 Sue Wierengo  
 Linda Wittkopp  
 Robert Wolfe  
 Joseph & Cynthia Wolff  
 John & Kathy Workman  
 In memory of Don and Mary B. Young  
 William Zahrt  
 Andrew Zorn  
 Glenn Zubryd & Tanya Molitor Zubryd

#### INVESTORS (\$500 - \$999)

Kenneth Adamski  
 Dave & Peg Alexander  
 George Allen  
 Mike & Terri Alstrom  
 Denise L. Amidon  
 Roger & Marilyn Andersen  
 Shannon Leigh Anderson  
 Kerra Anderson  
 Robin Anderson  
 Lee & Kathy Andrews  
 Ann Anys  
 Phillip Archer  
 Timothy & Cheryl Arter  
 David Aslakson  
 Michael Baauw  
 Dr. Tobin Bailey  
 Gregory Bajt  
 Bruce & Paula Baker  
 Michael Baldwin  
 Bill Balke  
 Chad Barber  
 Jeffrey Barnes  
 Robert Barnett  
 Steve & Lynn Batchelder  
 Daniel & Suzanne Beckeman  
 Frank & Susan Bednarek  
 James & Sonya Beggs  
 Susan I. Beggs  
 Amanda Beishuizen  
 Charles Belisle  
 James Berghuis  
 Shelly Berry  
 Eva Berumen  
 Thomas Best  
 Dan & Joyce Betz  
 Robert & Nancy Bierenga  
 Michelle Bierman  
 David Birr  
 Sandra Blanchard  
 David & Sandy Bliss  
 Valerie Blondin



## TOCQUEVILLE SOCIETY

#### ANNUAL GIFT OF \$10,000 OR MORE

George Anacker  
 Sidney & Eunice Bush Fund  
 Cannon Family Fund  
 Bob & Donna Chandonnet  
 Pat & Julie Donahue  
 Brad & Janice Hilleary  
 Dan & Sheryl Kuznar  
 Ken & Amy Nowak  
 Patrick O'Leary  
 Mike & Kay Olthoff  
 Mary C. Payne  
 Bob & Merle Scolnik  
 Jim & Kristine Tyler  
 Winthrop Wood

## LEGACY SOCIETY

#### GIFT OF \$10,000 OR MORE

George & Josephine\* Anacker  
 Gary & Deb Bogner  
 Dr. Max & Elizabeth Busard\*  
 Sidney & Eunice Bush Fund\*  
 Cannon Family Fund  
 Bob & Donna Chandonnet  
 Pat & Julie Donahue  
 Roger & Jan Eikenberry  
 Dr. Chris & Mary Eyke  
 Mark & Christine Fazakerley  
 Ron\* & Shirley Gossett  
 Eugene Hilliard Family  
 Inez Hamilton\*  
 Brad & Janice Hilleary  
 Larry & Lari Hines  
 James & Florence Jackson Family  
 Steve & Debbie Jackson  
 Dan & Sheryl Kuznar  
 Joan Majeski  
 Hester Newton  
 Ken & Amy Nowak  
 Patrick O'Leary  
 Olsen Family Fund  
 Mike & Kay Olthoff  
 Mary Payne  
 Dr. William Schroeder  
 Bob & Merle Scolnik  
 Robert D. & C. Corcoran Tuttle Fund\*  
 Jim & Kristine Tyler  
 Stan\* & Mary Tyler Memorial Fund  
 Kimberly VanKampen  
 John & Kathy Workman  
 Winthrop Wood

\*indicates deceased



# THANK YOU

## LEADERSHIP DONORS

Jessica Bodenberg  
Albert Boelkins II  
Lawrence Bogner  
Brendan & Beth Bolhuis  
Grant Bolhuis  
Dan Bonner & Dolores Trese  
James & Laura Bos  
Amanda Boss  
Alan Boulee  
Vincent Boyce  
Mary Bradley  
Craig Brandes  
Michael & Kari Brecht  
Darren Breit  
Robert Breuker  
Thomas Briggs  
Diane Briggs  
Jerry & Maria Brininstool  
Richard & Elaine Brothers  
Catherine R. Brubaker-Clarke  
Dana & Claudia Bryant  
Joy Burdett  
Carla Burmeister  
Brenda Burr  
Dawn Burrington  
Dr. DeAnna Burt  
Brett Burza  
Jennifer Bustard  
Patrick Butterfield  
Erin Byrnes  
Tracy Bytwerk  
Daniel & Marisa Caldwell  
John Campbell  
Jerry & Sherri Campbell  
Brandy & Terry Carlson  
Dee Carlson  
Dorothy Carlson  
William Carlston  
Brock Carlston  
Jean Carpenter  
Cameron Carson  
Woodrow Carson Jr.  
Bob & Carole Carter  
Anthony & Jessica Chandler  
Rich & Sheryl Chase  
James Cherney  
Don & Mei Ling Clemens  
Austin Cole  
Anton Colon  
Tyrone Conarty  
John Conarty  
Jerry & Kelley Conrad  
Kolin & Jene' Convertini  
Jeff & Deann Cook  
Angela Corbin  
Darren Corwin  
Tina Cory  
Beth Coulier  
David Culver

Ann Marie Meisch  
Steve Darke  
Robert & Jenny Dault  
Chris & Patti Davignon  
Bradley Davis  
Scott Davis  
Emmitt Davis  
Ellen Davis  
Charles & Pamela Davison  
Marsha DeBoer  
Kimberly DeBruin  
Jason & Stephanie DeKuiper  
Michael & Sylvia DeKuiper  
Brian DeLong  
Karen DeVries  
Ryan DeVries  
Mark & Jane Dezinski  
James DiAugustino  
Robert Dick  
Randall Diehm  
Randy & Christine Dill  
Dawn Dirheimer  
Sharri Domke  
Charlene Drake  
Eric Drust  
Richard Dunnill  
Michael Dusnik  
John Dykstra  
Rick Edgar  
Kelly Edwards  
Stephanie Eller  
David Ellis  
Daniel Elwell  
Rhonda Emery  
Dawn Erickson-Stevens  
Christine Essenberg  
Ebony Evans  
David & Cathy Fazakerley  
Martha Ferriby & Roger Rapoport  
Eugene & Karen Fethke  
Jose Fierro  
Mr. & Mrs. Brian Fillion  
Jim & Jackie Fisher  
Barbara Flahive  
Misty Fogg  
Kathleen Fonger  
Kenneth Foote  
Mark Foreman  
Jeffrey Fortenbacher  
Bill Forton  
Glen Fountaine  
Karen Foupht  
Jose Fraga  
Dr. Noelle Franklyn  
Marty & Joan Fredericksen  
Toni Freeland  
Alonzo Frierson  
Steven & Ann Fritz  
Patrick & Camille Gabris

Dan & Annie Gale  
Deborah Galy-Veldman  
Roy Garn  
Edward & Tonette Garner  
Daniel Gezon  
Donald & Krista Gibson  
Paul Gilbert  
Rachelle Gillard  
David Gilles  
Tanya Gilson  
Robert & Lori Goryl  
Lance & Lori Gosselin  
Laura Gotaas  
Kayla Gradisher  
Joseph & Kelly Graftema  
Myssi Griffin  
Brad Groeneveld  
Kiesha & Keith Guy  
Andrew Haak  
Marlene Hager  
Michael Hagye  
Janis Hall  
Anastasia Hall  
Pamela Hammer  
Don & Jennifer Hammond  
Jennifer Hammond  
Barbara Hankins  
Christopher & Megan Hanks  
Ray & Madge Hanslits  
Christopher Hare  
Jon Hart  
Devin Hartzog  
Ray Hasil & Family  
Allen & Kathy Hayes  
Thomas & Suzanne Hayes  
Mary Beth Hegedus  
Dr. Theresa A. Hegedus  
Jennifer Helton  
Clyde Hendrick  
Dawn Hennrick  
Thomas Hilliard  
Bobbie Hills  
David Hirvo  
Jeff Holmes  
Violet Hooker  
Scott Hopkins  
Ryan Horak  
Amy Hosford  
Richard Houseman  
Arron Houston Jr.  
Jeanette Hoyer & Brenda Summers  
Peter Hungerford  
Nichole Hunter  
Kelly Ingersoll  
James Jackson  
Brandee Jackson  
Jim & Brenda Jacobs  
Robert & Janet Jacobs  
Gregory Jenkins  
Christine Jeska  
Robert & Louise Jewell  
Amber Johnson  
Fred Johnson, Jr.  
Naomi Johnson  
Thomas M. Johnson  
George W. Johnson  
Kristin M. Johnson

Jane Johnson  
Jeffrey C. Johnson  
Joan & Gary Jolman  
Amanda Jonas  
Thomas Jones  
Anne Jorissen  
Holly Joseph  
Karen Joyce  
Alan & Robyn Kahrs  
Don & Angie Kalisz  
Kimm Karrip  
Becky A. Katzenbach  
Maureen Kearney  
Tammy Keck  
William Kelderhouse  
Alycia Kemme  
Lisa Kempf  
John Kennebeck  
Susan Killian-Anderson  
Jackie Kinnucan  
Jay Klein  
Mr. Paul Klimsza & Children  
William Klopp  
Kelsey Knapp  
Jackie Knowlton  
Timothy Koepp  
Dr. Jeffrey & Jenny Kommit  
Daniel & Brenda Kosheba  
Rich Krale  
Amanda Krentz  
Kenneth Krispin  
Gary Kronfield  
Frank & Teresita Kule  
Adonica Kunnen  
Ryan Kuznar  
Stephanie Ladegast  
Michael Lampen  
Pamela Land  
Susan Langlois  
Gary Langlois  
Cindy Larsen  
Tina Larson  
Lajoe Lawoyin  
Thu Van Le  
Mario Lebano  
Dr. John & Lisa LeClaire  
Jared LeMaire  
Myles Lemin  
Gayle Lenartowicz  
Garry Lenk  
Elizabeth Lewis  
Randy & Becky Lindquist  
Paul Lindsay  
Amy Lisman  
Lori Little  
Katherine Lound  
Andy & Jill Maciejewski  
Bradrick Mack  
Brian MacLachian  
Richard Magrath  
Kimberly Maguire  
Joan Majeski  
Jeffrey & Denise Malec  
Frank & Marlene Marczak  
Marquette Marsman  
Karen Martin  
John & Jessie Martin

William Martin  
Caleb Mauer  
Julie Maus  
Terry Maycroft  
Thomas & Michele McCauley  
Mark McCloskey  
Luke McCotter  
Thomas McCoy  
Thomas McDonald  
Dr. Jerry & Sandi McDowell  
James McElfish  
Kevin McFall  
Jared McFarland  
Brian & Shelley McFarren  
Ernie J. McKimmy  
Amber McMullin  
Jenny McNeill & Cavan Berry  
Mark McPheron  
Lauren Meldrum  
Stacy Mellema  
Avery Menefee  
Janet Meyers  
Timothy & Marian Michalski  
Dean & Gale Millar  
Mike Miller  
Stan Miller  
James Miller  
Jason Miller  
Beverly Mills  
Kevin Mills  
Amanda Mitchell  
Doris Mixer  
Cathy & Brian Monton  
Tyrone Moore  
Brenda Moore  
Renee & Keith Morgan  
Anna Moss  
Kim & Randy Mulder  
Michael Mulready  
Brad Murphy  
Patrick & Jenny Mutchler  
Ronn Nelson  
Eric Nelson  
Kevin & Tammy Nelund  
Dr. Dale & Connie Nesbary  
Kay Newell  
Brent Newville  
Doug & Patrica Nichols  
Randall Norden  
Kevin Norman  
Mark & Jennie Nowak  
Jillian Nowak  
Jeff Oberlin  
Scott O'Neill  
Dr. Michael Oneka, DO  
Kay Ostrom  
Philip Ottinger  
Charles Parker  
Brina Parker  
BreAnna Paul  
Phil & Chris Pearce  
Daniel Pena  
James & Megan Perreault  
Teliana Peterson  
Chris Peterson  
Todd C. Peterson  
Honorable Gregory Pittman

Michael A. Poland - Braeburn  
Wealth  
Roberta Porter  
Kelly & Lisa Powers  
Lisa Price  
Toni Pruitt  
Joseph Puls  
Joseph Purcell  
David & Mary Purtee  
Thomas Rabach  
Adrienne Rae  
Warren Randall  
Todd & Lori Rasmussen  
Kelly Rebone  
James Rees  
Ken & Sheila Reinecke  
Tate Reminder  
Alicia Riggs  
John & Dawn Riley  
Caroline Ring  
Holly Robinson  
Thomas & Patricia Robinson  
Lisa Rockwell  
Darren K. Rogers  
Dave Ronning  
Robert Roos  
Brian & Lori Rosema  
James Rottman  
Jana & Brandon Routt  
Donielle Routt  
Heather Ruffin  
Jacob Rupert  
Cora Russ  
Josh Russell  
Michelle Rutherford  
Thomas & LuAnn Ruthkoski  
Bart Sak  
Stewart Sanders  
Brett Sanford  
Michael & Catherine Saunders  
Patricia Scherf  
John Schilbe  
Stephen Schiller  
Emily Schlager  
Anthony & Dawn Schmitt  
Mike & Deb Schubert  
Tom & Kathi Schultz  
Nicole Schumaker  
Christine Schurkamp  
Ryan W. & Linda O. Scott  
Eric Scott  
Robert C. Scott  
John & Deb Sella  
Dr. John & Zephra Selmon  
Steve & Cerise Semrinec  
Christopher Serene  
Brent & Shelly Shaffer  
Leah Shaw  
Barbara M. Shawboose  
Dorsey Sherman  
Pamela Shunta  
Dustin Shunta  
Robert Silvernail  
Richard Simmons III  
John & Wendy Sinicki  
Melinda Slaughter  
Lawrence Smith

Dennis Smith  
Ronald & Lisa Smith  
Mike & Kara Smith  
Penny Smith  
Debra Anne Smith  
Amy Smith  
Randy S. Smith  
John & Sue Snider III  
Adam Snyder  
Ifedapo Sonuga  
Lawrence Spataro  
Kevin Spencer  
Dan & Tina Spoelman  
Brian St. Amour  
Lisa Stafford  
Gary Stahl  
Regina Starr  
Dr. Gregory Stempky  
Marsha Stewart  
Nicholas Stibitz  
Judy & Ted Stojak  
Paul & Holly Stolarski  
Stephen & Ruth Stream  
Bron Strickler  
Eric Sturr  
Kelly Suchecki  
Maryann Sullivan  
Scott & Kris Sutton  
Robert Szymoniak  
Peter L. Takunju  
The Tarzwell Family  
Paul Tater  
William Taylor, Jr.  
Opaline Taylor  
Mikalee Tazelaar  
Stefan Thielmann  
Paul & Linda Thompson  
William Thorns  
Monica Townsel  
Gretchen Toy\*  
Kevin Treptow  
Jeffrey S. Tripp  
Tennis Trucks  
Tom & Liz Trzaska  
Stuart Turner  
Shawn Turner  
Allison Turner  
Lisa Tyler  
Crystal Udell  
Ward & Rochelle VanDam

Daniel Vanderberg  
Thadeus Vanderlaan  
Donna Vandevries  
Kory VanDuinen  
John VanIrterson  
Thomas & Laura Veihl  
Stephen Vela  
Robert Veltman  
Larry & Kelly Visconti  
Todd Visser  
Curtis Walburg  
Dontae Walker  
James Warren  
Brent Warren  
Nathen & Rachelle Warrick  
Michelle Wazny  
Michael Wernstrom  
Ronald Whipple  
Mark & Sally White  
Heather Wiegand  
John & Karen Wieringa  
Robert Wiese  
Brooke Wiles  
Jeffrey Wilkerson  
Terees Williams  
Paul & Jean Wishka  
Richard Witham  
Carl & Peggy Wobser  
Timothy Workman  
John Yancone  
Dawn Yonker  
Robert & Susan Young  
Roger Zaverl  
Nick & Kimberlin Zelinsky  
Scott & Amy Zonnebelt  
Rose Zornes  
Tim & Laurel Zwit

## THANK YOU TO OUR ANONYMOUS DONORS!

*While United Way of the Lakeshore has made every attempt to ensure the accuracy of this list, some names may have been inadvertently missed. Please be sure to let us know if you were inaccurately omitted.*

*Please visit [unitedwaylakeshore.org/annual-report](http://unitedwaylakeshore.org/annual-report) for the most up to date listing.*

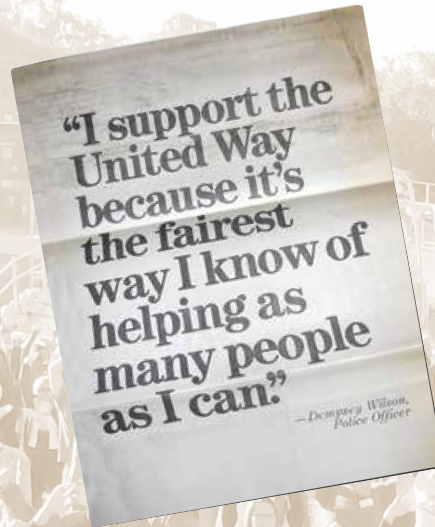


# 100 YEARS OF CARING

LIVE UNITED

**January 27, 1918.** It was three o'clock in the afternoon in West Michigan, but in far off France it was nine in the evening and guns were firing. As American soldiers were in the trenches fighting a European war, eight local leaders gathered at the Muskegon Chamber of Commerce to discuss needs closer to home. At the table were Executive Committee members W.E. Jeannot, F.C. Whitney, Archie McCrea, H.E. Langeland, W.H. Wilson, A.J. Dratz, F.W. Riblet and T. Lunsford; absent at that first meeting were members L.C. Walker and C. Young. Officers were elected, and motions were passed to hire office assistance and buy office supplies. Publicity and Membership committees were formed, then the meeting was adjourned.

The Muskegon War Chest was underway! This was the foundation from which the Community Chest would rise, creating a brighter future for our community, and paving the way for what we now know as **United Way of the Lakeshore!**



1918 Pledge Card



1951  
In the News

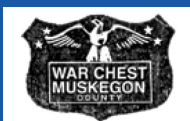
"We must build up a new civilization; a new idea in giving... the rating of a man must be based on what he is and does."

Colonel F.C. Whitney  
President of the War Chest



Milk Carton Advertisement

1918



COMMUNITY CHEST





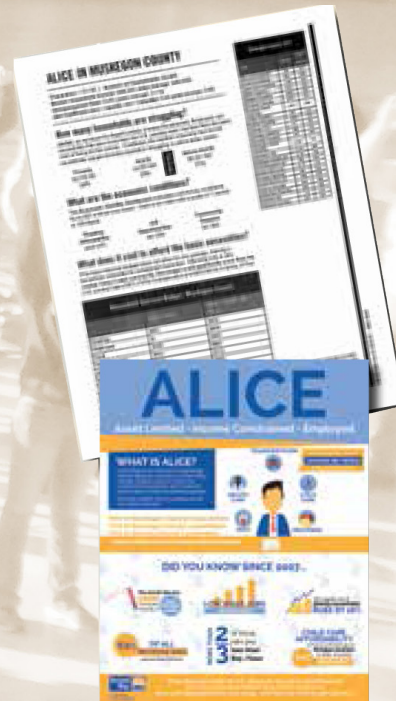


*Celebrating*  
**100**  
*years*  
**Inspiring Change and Building Communities**  
**1918 2018**



**January 2018.** United Way of the Lakeshore begins a year long celebration of a century of uniting to inspire change and build thriving communities. From it's beginning, forged in a time of war, through a hundred years of evolving to meet the needs of a changing population, United Way of the Lakeshore has formed solid partnerships, engaged legions of donors and volunteers, and supported programs that support every person in our community. We believe that together, we can fight the challenges that come our way, and that, **United We Win!**

## 1971: First Million Dollar Campaign



**United Way**  
of Muskegon County

**United Way  
of the Lakeshore**



2018





WORK  
LEARN  
SERVE

**RIDE** June 16 [RideMI.org](http://RideMI.org)

**GOLF** August 18 [unitedwaylakeshore.org/golf](http://unitedwaylakeshore.org/golf)

**CARE** September 7 [GetConnected.org/doc](http://GetConnected.org/doc)

**LIVE UNITED 2018**



**THANK YOU SIGNATURE SPONSORS!**



**ARCONIC**



**CWC** **TEXTRON**



**MERCY HEALTH**



31 E. Clay Avenue, Muskegon, MI 49442 – Phone: 231-722-3134 – Toll Free: 877-722-3134  
[www.unitedwaylakeshore.org](http://www.unitedwaylakeshore.org) – Facebook: UnitedWayLakeshore – Twitter: @uwlakeshore