



# UNITING TO INSPIRE CHANGE AND BUILD THRIVING COMMUNITIES

LIVE UNITED







Every financial gift made to United Way of the Lakeshore in 2016 was put to work right here in Muskegon, Newaygo, and Oceana Counties. **All funds raised supported 68 programs** that were reviewed by local volunteers to ensure each met quality standards for programming, governance, finance, and capacity.

By **LIVING UNITED**, each individual donor was able to give a one-time gift with confidence that the contribution would make a direct impact on many lives in our local community.



Long-lasting change does not happen simply through the funding of services. Policies at the local, state, and federal level can affect circumstances for our entire community and policy makers must be knowledgeable of the needs of Lakeshore area residents. In 2016, United Way was a voice for change, ensuring decision makers were aware of our community conditions and priorities. On the state level, we **presented a case for increased funding for 2-1-1 helplines, resulting in an additional \$750,000** for a total of \$1.25 million in state funding for the program. We also **advocated for an increase in the eligibility for families to access to childcare vouchers** to help defray the cost of high-quality childcare which went into effect on October 1, 2016.



United Way of the Lakeshore's **Volunteer Center connected 47 health and human service organizations with the time and talent of 701 people in 2016** while also providing trainings to volunteer-driven organizations. Our online database, Get Connected, allows us to provide valuable human resources to nonprofit agencies and rewarding service work.

**Day of Caring events brought together almost 400 people** to lend a hand to programs that help ALICE.

**63 Retired Senior Volunteer Program members also had unique opportunities to serve** with their peers. In August, a group of retired community leaders formed United After Work to keep donors LIVING UNITED after leaving the workplace by joining our efforts to help working families meet their basic needs.



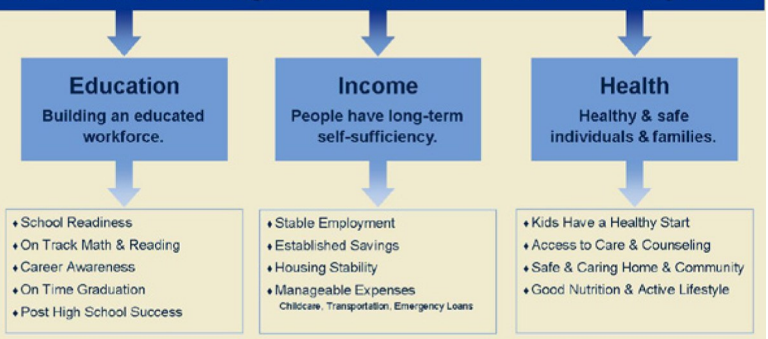


**ALICE**

**ASSET LIMITED, INCOME CONSTRAINED, EMPLOYED**

Uniting to inspire **change** and build **thriving communities**.

**10,000 more working families meet their basic needs by 2025**



### ACCESS TO RESOURCES

- United Way invested \$83,636 in partnerships aimed at ensuring access to resources for all in times of need.
- The 2-1-1 program answered **23,463 assistance needs**.
- A Prosperity Region 4A **Veterans Survey** was commissioned to determine the greatest needs of those who have honorably fought for our nation yet struggle to get by at home in Newaygo and Oceana Counties.

### DEVELOPING SOLUTIONS

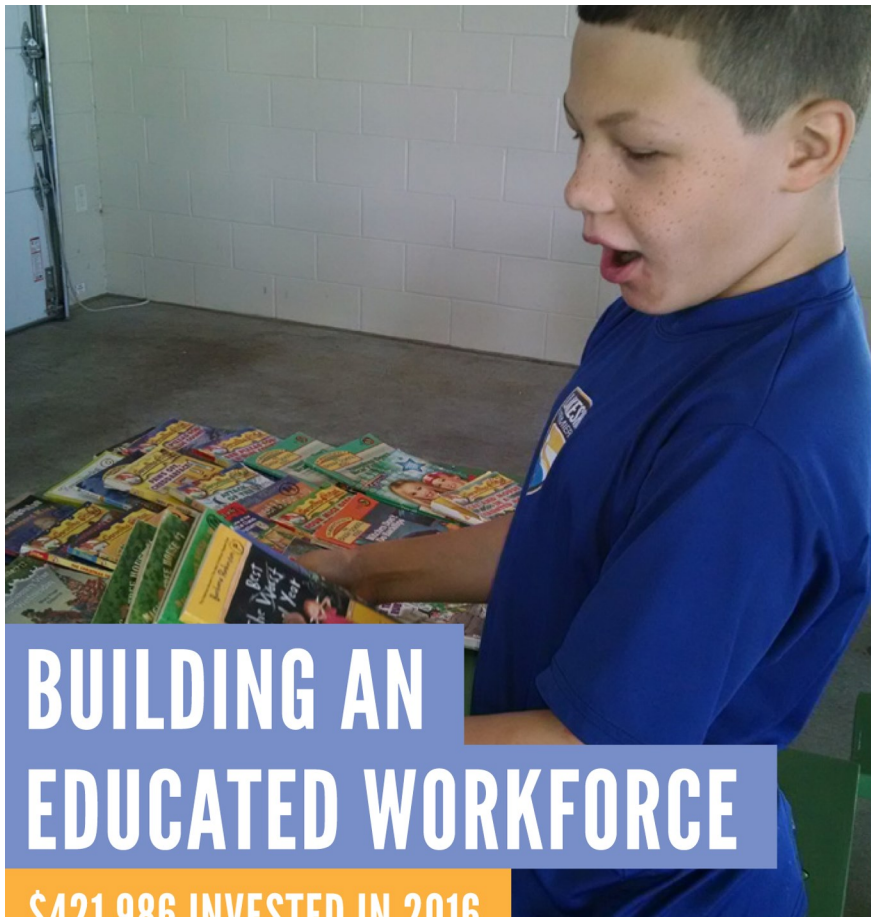
- United Way garnered community solutions through January's ALICE Summit and June's Childcare Leadership Breakfast.
- We made major changes to the way we invest donor dollars through the adoption of our **Agenda for Change** (graphic above).

- A new Request for Proposals that sought innovative solutions to ALICE BARRIERS resulted in **\$102,818 in new programming** through Boys and Girls Club, El Centro Hispano Oceana, The Car Ministry of Fremont Service Committee, Goodwill, Love INC, Mission for Area People, and Read Muskegon.
- It also brought about the Muskegon County expansion of an Employers Resource Network, which placed a **success coach and emergency loan program on site at four Muskegon County employers** – CWC Textron, Eagle Alloy, Harbor Hospice, and Port City Group, joining Wesco, GHSP, and others.



**40% of households in our community struggle to meet basic living expenses.**





# BUILDING AN EDUCATED WORKFORCE

**\$421,986 INVESTED IN 2016**

**EDUCATION**

United Way funded 20 community programs and initiatives in 2016 that focus on long-term educational success for the youngest members of our community:

## 197 PRE-SCHOOLERS AND 41 EARLY ELEMENTARY STUDENTS

were paired with 14 AmeriCorps volunteers for one on one reading and skill building resulting in 70% improvement in all measured outcomes.

## 706 CHILDREN UNDER 5 YEARS OLD

were registered to receive free monthly home delivery of age appropriate books until age 5 after the Dolly Parton Imagination Library was expanded to serve all of Muskegon County.

## 182 STUDENTS

were provided free after-school care including homework assistance, reading, and activities through Lights On Afterschool.

## 11 NATIONAL CIVILIAN COMMUNITY CORPS YOUNG ADULTS

staffed summer recreation programs for area youth and hosted a Day of Action event with support from Arconic connecting kids with books collected by Nichols employees.

## 3,139 CHILDREN

were introduced to new experiences and skill building under the guidance of trained and caring adults through youth mentoring programs.

## 114 LOCAL TEENS

acquired employable skills for future career success while serving our community after working at 20 area nonprofits, including United Way, through the DTE Summer Youth Employment Program.

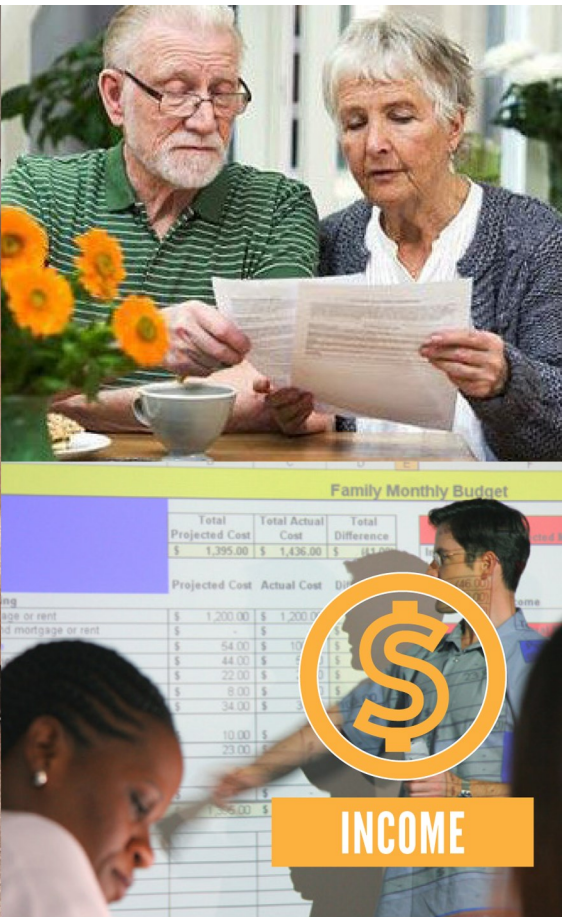
## 12 INTERACTIVE LEARNING PLAY STRUCTURES

were built by Newaygo Day of Caring volunteers for outdoor placement throughout the county.

## 744 OCEANA HIGH SCHOOL STUDENTS

were guided on their path toward post high school success.





# INSTALLING LONG-TERM SELF-SUFFICIENCY

**\$260,978 INVESTED IN 2016**

United Way works with 19 programs that not only help in times of crisis, but also work to put families on a path to financial sustainability:

**4,650 STRUGGLING FAMILIES**  
received help with money management through education and financial assistance.

**360 POTENTIAL HOME-BUYERS**  
received financial education and home-buyer readiness training, and 2 homes were built for first-time home-buyers.

**18,627 FINANCIAL NEEDS**  
were met for families needing assistance with food, utilities, and other hardships.

**333 INDIVIDUALS**  
were helped by disaster relief when they were hardest hit by an unexpected emergency.

**432 HOUSEHOLDS**  
obtained access to safe and affordable housing, with an end to veteran homelessness finally in sight.

**2,556 ALICE TAX PAYERS**  
received income tax assistance resulting in well over \$1 million returned to our community.

**\$15,225 IN EMERGENCY LOANS**  
were distributed to Employer Resource Network employees.

**176 PEOPLE**  
received transportation assistance so they could get to work and medical appointments.





# ENSURING HEALTHY & SAFE INDIVIDUALS AND FAMILIES

\$559,006 INVESTED IN 2016

HEALTH

United Way supports 24 programs that ensure healthy living for our lakeshore residents:

**1,198 CHILDREN AND ADULTS**

benefited from abuse counseling, advocacy and assistance in their times of crisis.

**1,138 FAMILIES**

were strengthened through access to counseling, parenting education, and mediation services.

**10,219 ROUND-TRIP RIDES**

for medical care were provided to area seniors and disabled persons.

**168 BICYCLISTS**

promoted healthy living by participating in our fifth annual RIDE UNITED bike event.

**776 YOUTH AND YOUNG ADULTS**

learned the importance of healthy meals and how to prepare them affordably.

**73 SENIORS**

received homeware and companionship, enriching their lives.



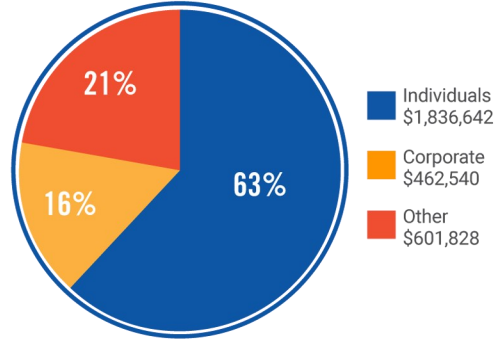


# 2016 CAMPAIGN

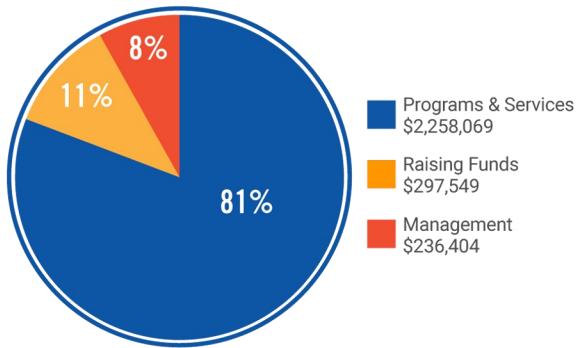
7,042 DONORS RAISED \$2.35 MILLION

## FISCAL YEAR 2016

### Revenue Sources



### Expenses



## 2016 BOARD OF DIRECTORS

- Mary Boyd, Mercy Health
- Sherri Campbell, Community Shores Bank
- Laura Carpenter, Arconic
- Bob Carter, Retired Muskegon Co. Sheriff
- Jessica Chandler, Merrill Lynch
- Walt Christophersen, IBEW Local 275
- Lee Coggin, Baker College
- Ed Garner, Muskegon Area First
- Lisa Hegenbart, Big Brothers Big Sisters
- Rich Houtteman, Consumer's Energy
- Erik Jepsen, Kautex Textron, CWC Division
- Fred Johnson, Muskegon Co. Public Defender
- Linda Juarez, Hackley Community Care

- Erin Kuhn, WMSRDC
- Tyshon Massey, UAW Local 539
- Mark Meyers, Chair, City of Norton Shores
- Gary Nelund, State Farm Insurance
- Josh Reece, Parmenter O'Toole
- Dawn Riley, Gray & Company
- Robert Ross, Muskegon Community College
- Lisa Sabourin, Employers Association of West MI
- Stewart Sanders, Newaygo Co. Register of Deeds
- Dave Sipka, Retired MAISD
- Derrick Smith, City of Muskegon
- Greg VanWoerkom, U.S. Representative Huizenga's Office
- Dwight Vines, Sun Chemical

## 2016 CAMPAIGN CABINET

- Erik Jepsen, Chair – Kautex Textron, CWC Division
- Penny Albertie, Retired Red Cross
- Bob Barnett, Labor Representative-UA174
- Brendan Bolhuis, Beacon Recycling
- Brett Burza, Raymond James
- Bob Carter, Retired Muskegon County Sheriff
- Anthony Chandler, City of Norton Shores
- Jessica Chandler, Merrill Lynch
- Christie Hill, Arconic
- Rich Houtteman, Consumers Energy

- Brad & Janice Hilleary, Webb Chemical
- Jackie Johnson, Arconic
- Cyndi Langlois, Muskegon Community College
- Chelsea McEntaffer, Arconic
- Mike Mitchell, American Red Cross
- Blair Moreau, Mercy Health
- Mike & Kay Olthoff, Nichols
- Josh Reece, Parmenter O'Toole
- John Severson, MAISD

## 2016 LOANED EXECUTIVES

- Debbie Anderson, Child Abuse Council
- Steve Barnard, County Waste Water
- Alex Conrad, Y-Knot Embroidery & Screenprinting
- Jennifer Grinnell, Life Circles
- Stacy Hollenbeck, Huntington Bank
- Brian Kammerzell, Comerica Bank
- Steve Keglovitz, Community Volunteer
- Jackie Knowlton, Fifth Third Bank

- Cyndi Langlois, Muskegon Community College
- Jeff Malec, Malec Engineering Solutions
- Lauren Meldrum, Health West
- Lori O'Brien, ALCOA
- Kim Parmer, Cannon Muskegon
- Ben Reider, Parmenter O'Toole
- Donielle Routt, Nowak Machine
- Farrah Starr, Edward Jones
- Skyler Vaughan, CWC Textron



# THANK YOU

## WORKPLACE CAMPAIGNS

A J Vallier  
A. D. Bos Vending Services  
Access Health \*  
Action Industrial Supply Co.  
ADAC Automotive  
AeroVision International \*\*\*  
AgeWell Services  
Air Master Systems \*  
Alcoa Howmet Corporation/UAW 1243  
American Red Cross \*\*\*  
Amway  
Andersen Corporation \*\*\*  
Anderson Global/Anderson Express/IAM PM 2848  
Anderson Technologies  
Arbor Circle Corporation  
Area Community Service Employment  
Asphalt Paving, Inc.  
AT&T  
Auto Owners Insurance Co - Claim Branch \*\*  
Autocam Corporation  
Autodie  
Automatic Spring Products Corp.\*\*  
Baker College of Muskegon \*  
Bank of America  
Barber Steel Foundry Corp. \*  
Bayer \*\*  
Beacon Recycling Inc \*  
Bekins Audio/Video & Appliance  
Bellabay Realty \*\*\*  
Bennett Pump  
Best Buy  
Betten Chevrolet  
Big Brothers Big Sisters of Lakeshore \*\*\*  
Bissell  
Blue Cross Blue Shield of Michigan \*\*  
Bott & Spencer PC  
Braeburn Wealth Management \*\*  
Brickley DeLong, P.C. \*\*\*  
Brilliance Audio  
Bristol-Myers Squibb  
Brooks EC Regional Corr. Fac./UAW 6000&AFSCME  
Brunswick Bowling & Billiards/IAM 2597  
Bucher Hydraulics  
Campbell Grinding  
Campbell Group/Acisure  
Cannon Muskegon Corp. \*\*\*  
Carmen's Cafe  
Catholic Charities West Michigan \*\*  
Century A & E  
Challenge Machinery Co. USW 2-677  
Chassis  
Chemical Bank  
Chemtech Systems Inc. \*\*\*  
Child Abuse Council of Muskegon \*\*\*  
Cigna  
City of Fremont  
City of Muskegon/SEIU \*  
City of North Muskegon \*\*\*  
City of Norton Shores/Local 2559 IAFF \*  
City of Roosevelt Park  
Clifford Buck Construction  
Carpenters IOD, Laborers 365  
Coldwell Banker Woodland Schmidt Realty \*\*\*  
Cole's Quality Foods Inc IBT 406  
Comcast\*\*\*

Comerica Bank \*\*\*  
Community Access Line of the Lakeshore \*\*\*  
Community Foundation for Muskegon County \*\*  
Community Shores Bank \*\*\*  
ConAgra Foods  
Conn Geneva & Robinson CPA \*\*  
Consumers Energy Fremont Area/UWUA 103 \*\*  
Consumers Energy/UWUA 103 \*\*  
Cnty of Musk.AFSCME 517/SEIU/IBT 214/FOP/MNA \*  
CWC Textron/UAW 539 \*\*\*  
Department of Human Services/UAW 6000  
Dethloff Insurance Agency  
Disability Network West Michigan \*\*\*  
District Health Department #10 Oceana County \*  
Dow Chemical  
Dr. Pepper Snapple  
DTE Energy Company Retirees  
DTE Energy/ICWU-C70 \*\*\*  
Eagle Alloy Inc \*\*\*  
Eagle Aluminum Cast Products \*\*\*  
Eagle CNC Technologies \*\*\*  
Eagle Precision Cast Products \*\*\*  
East Muskegon Roofing & Sheet Metal  
élan Realty Lakeshore \*\*\*  
Eli Lilly  
Ellis Capital Management  
Enterprise Holdings  
ESCO Company LLC  
Every Woman's Place/Webster House \*\*  
Excel Propane - Fremont  
Excel Propane - Fruitport  
Excel Propane - Hart  
Falcon Corporation  
Family Financial Credit Union  
Federal Express  
Fifth Third Bank \*\*\*  
First General Credit Union \*\*\*  
First Stone Realty \*\*\*  
Fleet Engineers Inc \*  
Ford Motor Company  
Fremont Area Community Foundation  
Fremont Insurance Company \*\*\*  
Fremont Public Schools/MEA  
Frontier/IBEW 1106  
Fruitport Charter Township  
Fruitport Community Schools/MEA  
Gary Conrad Memorial Fund  
GE Aviation Muskegon \*  
General Motors  
Gerber Federal Credit Union \*\*\*  
Gerber Foundation  
GHSP - Hart \*  
GHSP - A JSJ Business  
Ginman Tire Company  
Girl Scouts of Michigan Shore to Shore  
Glik's  
Global Tech  
Goodwill Industries \*  
Gordmans  
Gordon Food Service  
Gran Rapids Public Schools  
Grand Valley State University  
Grant Public Schools/MEA  
Graphics House Express  
Gray & Company/IBT 406 \*\*\*  
Great Lakes Dental Excellence \*\*  
Great Lakes Die Cast  
Great Lakes Energy A34  
Greenridge Realty \*\*\*  
H & R Block  
H & S Companies Hendon & Slate, PC \*\*\*  
Hackley Community Care Center  
Hackley Public Library  
Harbor Hospice \*\*  
Harbor Light Credit Union \*

Harbor Steel & Supply Co.  
Hart Public School District  
Hazekamp Meats  
Hesperia Community Schools  
Hines Corporation  
Holton Public Schools/MEA \*\*  
Honeywell International  
Hooker DeJong Architects \*\*\*  
Hot Rod Harley-Davidson \*  
Howard Miller  
Huntington Bank \*  
Illinois Tool Works (ITW)  
iMove  
Independent Bank - White Cloud  
Independent Bank \*\*  
International Business Machines \*\*  
J & M Machine Products  
J Todd Hunt DDS PLC  
Jackson - Merkey Contractors  
JC Penney Company  
Jerviss-Fethke Insurance  
Johnson & Johnson  
Johnson Controls  
JP Morgan Chase & Company  
K L Industries, Inc./Ameriform  
Kaydon Corporation/IAM 2597  
Kautex Textron, CWC Div/UAW 539 \*\*\*  
Kellogg's Corporate Citizenship Fund  
Kid's Food Basket  
Knoll Inc. \*  
L-3 Communications/UAW 113&1279  
Lake Michigan Credit Union  
Laketon Township \*\*  
Legal Aid of Western Michigan \*\*\*  
LifeCircles \*\*  
Light Corporation  
Local 275 IBEW  
Lorin Industries \*  
Louis Padnos Iron & Metal Co. \*\*\*  
Macatawa Bank  
Macy's West  
MAHLE  
Malec Engineering Solutions\*\*\*  
Manpower  
Mary Free Bed Rehabilitation  
Mason - Oceana 911  
McKenzie - Price Agency Inc \*\*\*  
MDOT-Muskegon  
Mediation & Restorative Services \*\*\*  
Meijer Fruitport/UFCW 951 \*\*  
Meijer North Muskegon/UFCW 951 \*\*  
Meijer Norton Shores/UFCW 951 \*\*  
Mercantile Bank of Michigan  
Mercy Health Lakeshore  
Mercy Health Saint Mary's  
Mercy Health Visiting Nurse Services  
Mercy Health/SEIU, NUHW & MNA \*  
Merrill Lynch  
Metal Technologies - RDI  
Michigan Education Association  
Michigan Spring & Stamping \*  
Michigan's Adventure  
Mid-City Supply Company  
Midstate Title Agency  
MLive Media Group/Muskegon Chronicle  
Modular Systems Inc  
Mona Shores Public Schools/MEA \*  
Montague Area Public Schools/MEA \*  
Muskegon Area ISD \*\*\*  
Muskegon Brake & Tire \*  
Muskegon Catholic Central  
Muskegon Charter Township/AFSCME  
Muskegon County Road Commission/Local 2151 UAW  
Muskegon Community College/SEIU & MEA  
Muskegon Co-Op Federal Credit Union \*\*  
Muskegon Correctional Facility/UAW 6000



Muskegon County Habitat for Humanity \*  
 Muskegon Family Care  
 Muskegon Heights Public School Academy  
 Muskegon Insurance Agency \*\*\*  
 Muskegon Lakeshore Chamber of Commerce \*\*\*  
 Muskegon Public Schools/MEA  
 Muskegon Surgical Associates  
 New York Life  
 Newwaygo County  
 Newwaygo County Mental Health  
 Newwaygo County Regional Education Svc Agency  
 Newwaygo County Road Commission  
 Newwaygo Public Schools/MEA  
 Newkirk Electric  
 Nexes Realty Inc \*\*\*  
 Nichols \*\*  
 Noble Company \*\*  
 North Muskegon Public Schools/MEA \*\*  
 Northern Machine Tool/IAM 475 \*\*\*  
 Northshore Dental Associates  
 Northside Veterinary Hospital  
 Nowak Machined Products, Inc. \*\*  
 Nugent Sand Company \*\*\*  
 Oakridge Public Schools/MEA  
 Oceana County Employees  
 Old National Bank Foundation  
 O'Malley's Pest Control  
 Orchard View School District/MEA  
 O'Reilly Auto Parts - Muskegon  
 O'Reilly Auto Parts - Newwaygo  
 Pacific Floor Care \*\*  
 Parmenter O'Toole \*\*\*  
 Parrigo Company  
 Pentwater Public Schools/MEA \*  
 Plante Moran  
 PNC Bank \*  
 Port City Cruise Line Inc.  
 Pratt & Whitney Component Solutions, Inc \*\*\*  
 President Ford Council BSA  
 Pressures & Pipes Inc  
 Pro-Fab Production Fabricators, Inc.  
 Quality Tool & Stamping \*\*  
 Quigley Draperies  
 Radiology Muskegon PLC \*  
 Ramos & Sons Body Shop  
 Ravenna Public Schools/MEA \*  
 Raymond James and Associates \*\*\*  
 rcp marketing  
 Realtors Who Care, Inc.  
 Reeths Puffer Public Schools/MEA \*  
 Rehmann \*\*\*  
 Revel \*\*  
 SAF Holland/UAW 1703 \*\*  
 Salvation Army- Muskegon \*\*\*  
 Senior Resources of West Michigan \*\*\*  
 Servpro of Muskegon & Holland \*  
 Shack Enterprises, Inc.  
 Shape Corporation  
 Shelby Public Schools/MEA  
 Shelby State Bank \*  
 Shellcast Inc \*  
 Shopko  
 Shoreline Insurance Agency, Inc. \*\*\*  
 Shoreline Metal Fabricators  
 Sidock Group Inc \*  
 Spartan Stores, Inc.  
 SpartanNash  
 Spectrum Health  
 Spectrum Health Gerber Memorial  
 SPX Corporation

SPS Fiberglass Products\*\*  
 Stanco Metal Products  
 Star Logic Solutions \*\*\*  
 Star Title Agency  
 State Farm Companies Foundation  
 State Farm Insurance  
 State of Michigan UAW 6000 & AFSCME  
 Steelcase  
 Sun Agency  
 Sun Chemical Corporation/USW 2-987 \*  
 Superior Monuments Co  
 Sytsema Funeral Home  
 T J Maxx  
 Target Corporation \*\*  
 Target Mold Corporation  
 Tech Group  
 TGW Systems Inc.  
 The American Bottling Company  
 The Arc Muskegon \*\*\*  
 The Auto Club Group  
 The Boldt Company  
 The Book Nook & Java Shop  
 The Bon Ton Stores Inc.  
 The Farm  
 Therm-O-Disc, Inc.  
 Tobin L. Bailey DDS  
 Tower Laboratories - Montague \*\*  
 Trace Analytical Laboratories \*\*  
 Transnation Title Agency of Michigan \*  
 Tyler Sales Company Inc/Teamsters IBT 406 \*\*  
 United Healthcare Corporation  
 United Parcel Service/IBT 406 \*\*\*  
 United Way of the Lakeshore \*\*\*  
 VanKam Trailer Sales & Mfg Co.  
 Varnum LLP  
 Viking Tool & Engineering \*\*  
 Village of Pentwater  
 Waddel & Reed, Inc.  
 Walgreen Drug Store  
 Walker, Fluke & Sheldon, PLC  
 Walkerville Well Drilling  
 Walmart  
 Wal-Mart Supercenter  
 Warner Norcross & Judd LLP \*\*\*  
 Wasserman's Flower & Gifts  
 Webb Chemical Service Corp \*\*\*  
 West Michigan Community Mental Health  
 West Michigan Plumbers Fitters Local 174 \*\*\*  
 West Mich Shoreline Regional Dvlpmt Comm. \*\*\*  
 West Michigan United Labor  
 West Shore Bank  
 West Shore Urology PLC  
 West Shoreline Corr. Facility/UAW 6000 & AFSCME  
 White Agency \*\*\*  
 Whitehall District Schools/MEA  
 WM Molding  
 Wolverine Worldwide  
 Wood Shed Bike Rentals  
 Wood Trucking Company  
 Workbox Staffing - Barber Steel  
 Younkens Dept. Store \*\*\*

\*\*\* Gold 60-100% Participation  
 \*\* Silver 40-59% Participation  
 \* Bronze 20-39% Participation

## TOP 10 CAMPAIGNS

### MUSKEGON

Mercy Health  
 Alcoa Howmet Corporation  
 Kautex Textron, CWC Division  
 Cannon Muskegon Corp.  
 Knoll Inc.  
 County of Muskegon  
 ADAC Automotive  
 Consumers Energy  
 SAF Holland  
 Muskegon Area ISD

### NEWAYGO

Fremont Insurance  
 Gerber Federal Credit Union  
 Spectrum Health Gerber Memorial  
 Newwaygo County  
 Bucher Hydraulics  
 White Agency  
 Newwaygo Co. Regional Education  
 Service Agency - NC RESA  
 Newwaygo Public Schools  
 Fremont Area Comm. Foundation  
 Fremont Public Schools

### OCEANA

Gray & Company  
 GHSP - Hart  
 Barber Steel Foundry Corp.  
 Shelby State Bank - Shelby  
 Mercy Health Lakeshore Campus  
 Shelby Public Schools  
 Pentwater Public Schools  
 Hart Public School District  
 Excel Propane  
 West Shore Bank

## THANK YOU TO ALL OF OUR WORKPLACE DONORS!

While United Way of the Lakeshore has made every attempt to ensure the accuracy of this list, some workplaces may have been inadvertently missed. Please visit [www.unitedwaylakeshore.org/annual-report](http://www.unitedwaylakeshore.org/annual-report) for the most up-to-date listing, and be sure to let us know if you were inaccurately omitted.



# THANK YOU

## LEADERSHIP DONORS

### BARONS (\$5,000 - \$9,999)

David & Barbara Bloomfield  
Bob & Mary Boyd  
George Cannon III  
David Gerdes & Carolyn Smith-Gerdes  
Martha Giacobassi  
N. Ione Lemmen  
Greg & Mary Loomis  
Greg & Barbara Marczak  
Steve & Debbie Olsen  
Thomas U. & Frieda M. Olson  
David & Diane Punola  
Ian Kurt Rosen  
Tadd & Nancy Seitz  
Roger & Jan Spoelman  
Dr. Remington & Ginny Sprague  
Dr. Richard & Priscilla Wilcox

### AMBASSADORS (\$2,500 - \$4,999)

Bonnie Adamczak-Brown  
Jeff & Pam Alexander  
Gary & Suzanne Allore  
Jim & Teresa Baker  
Carol Brocci  
Richard & Nancy Cramblet  
Dr. Donald & Nancy Crandall  
Charles & Pamela Davison  
David & Diane DiRito  
James & Linda Elwell  
Jennifer Fisher  
Phil Fortier  
Erik & Lora Gentzkow  
Greg & Shelly Green  
Christie Hill  
Larry & Lari Hines  
Dr. J. Todd Hunt  
Sheila Kitchen  
Wayne & Nancy Kohley  
William & Lisa Kordupel  
Dr. Scott and Donna Lachniet  
Chris McGuigan & Gary Neal  
John & Betsy McIntyre  
Marvin & Kathy Moore  
Loyal & Allison Norkett  
Dan & Kendra Olsen  
Darryl & Connie Rabon  
Marvin & Christine Robere  
Dr. Hikmet and Karen Sipahi  
David & Wendy Sipka  
James & Lisa Smith  
Jim & Sheila Steffel  
Bill & Cindi Stefl  
Alan Steinman  
Kimberly Suarez  
Connie Taylor  
Peter Turner  
Robert & Corky Tuttle Fund  
Michelle Warfle  
Michael Westra  
Judith Wilcox

### LEADERS (\$1,000 - \$2,499)

Don & Sharon Aley  
Roger & Marilyn Andersen  
Kristine Anderson  
Jeffrey Anderson  
Josh Anderson  
Montie Annis  
Philip Ault  
Fraser Baker  
Douglas Bard  
Jeffrey Barnes  
VanBoxel Barnes Charitable Fund  
Adam & Melissa Bayne  
Kari Belanger  
Robin Belcourt  
Dean & Renee Berens  
Trisha Berus  
Samuel & Sheila Billips  
Sally Birkam  
David & Karen Booth  
Matthew & Judy Bosma  
Tim & Nancy Bott  
Karen Brittner  
Heather Brolick  
Richard Brooks  
Drs. Gerald Buchanan & Michelle Matheson  
John & Colleen Buckley  
Shawn & Brenda Buckner  
Dr. Brian & Mary Burdo  
Kelly Burns  
Brett Burza  
Rhonda Butterfield  
Ken & Sheryl Callow  
Jeana Carlson  
Robert & Laura Carpenter  
Michael & Peggy Carson  
Drs. Michael Cerminaro & Connie Verhagen  
Dennis & Marilyn Chandonnet  
Dr. Robert Christie  
Dr. Mark & Kristina Clark  
Don & Mei Ling Clemens  
Gail Cole  
Dr. Harvey & Peggy Comrie  
Mishelle Comstock  
Leon & Lisa Conklin  
John Cooney  
Darrel & Melanie Copley  
Orville & Susan Crain  
Lowell & Nell Dana  
Steve & Darleen Dangel  
Ken & Judy Danhof  
Tim & Tammy Davison  
Janet Day  
Ed DeJong & Diane VanWesep  
Mark & Julie DeJonge  
Jason & Stephanie DeKuiper  
Donald & Susan DeLong  
Robert Derby  
Chris Dishong  
Steve & Judi Dix  
Doug Dorn  
Terri Lynn Draeger  
Melinda Draper  
Robert & Cathleen Dubault  
Linda Dunmore  
Allen Ely  
John Eridon  
Curtis & Melissa Evans  
Katherine Exton  
Donald & Sue Farmer

Mark & Christine Fazakerley  
Douglas & Kimberly Fenbert  
Jim & Jackie Fisher  
Ronald Froese  
Martha Gabrielse  
David & Judy Gingras  
Michael & Bonnie Gluhanich  
Dr. Gretchen Goltz  
John & Martha Gork  
Mary Anne Gorman  
Lance & Lori Gosselin  
Ron\* & Shirley Gossett  
Janet Graham  
Brian Griffin  
Misty Griswold  
Robert & Eileen Grunstra  
Cynthia Halifax  
Deanna Hall  
David Harris  
James & Deborah Heethuis  
Dr. James & Dr. Julie Hegedus  
Amy & Matt Heiser  
Stacey Henkel  
Renae Hesselink  
Don & Jamie Heuschele  
Jamie Heuschele  
Dr. Thomas & Heidi Hill  
Spencer & Kara Hines  
Anne Hoekenga  
Stacey Hoffman  
Ed & Denise Holstege  
Corinn Hower  
Bradley & LuAnn Hulce  
Kenneth Hungerford  
Ed Hunt & Nancy McCarthy  
Thomas & Janice Hylland  
Jose & Sue Infante  
Steve & Deb Jackson  
Paul & Karen Jackson  
Robert & Janet Jacobs  
Dr. Joel & Kathleen Jarvis  
Trezelle Jenkins  
Erik & Nicole Jepsen  
Charles E. Johnson  
Steven Arnie Johnson  
Dawn Johnson  
Rev. James Johnson  
Ronald Johnson  
Linda Juarez  
Dr. Stephen & Andrea Kahn  
Karen Kayes  
Christopher Kelly  
Katherine Kesteloot Scarbrough  
Donald & Lindsey Ketner  
Chad & Brooke Kieft-Anderson  
Garland & Laverne Kilgore  
Tyler Kindinger  
Jeffrey King  
Anthony & Margaret Kolenic  
Amy Kozanecki  
Clyde & Penny Krepps  
Robert Krol  
Michael Kruzona  
Adonica Kunnen  
Jeffrey & Kelly Kurburski  
Ed & Theresa Kuznar  
Michael Kuznar  
Mark Lambert  
Brian Lang  
Jerry & Alison Lang



Gregory & Diane LaPres  
 David & Kerri Layman  
 Terrance Leberfinger  
 Laiyee Leong  
 Kenneth & Charlotte Lindstrom  
 Bill & Kenna Loxterman  
 Michael Malady  
 Jeffrey & Denise Malec  
 Samuel Mancuso  
 Steve Mark & Camille Jourden-Mark  
 Tyshon & Kelly Briggs-Massey  
 Paul Matz  
 Steven & Caroline Mayberry  
 Teresa McDaniel  
 Dr. Janice McDonald  
 Timothy McGettigan  
 Will Meier  
 Cindy Meloche  
 Gary & Wendy Merkey  
 Bjoern Meyer  
 Mark & Melissa Meyers  
 Dean & Gale Millar  
 Mike Miller  
 Roger & Jane Missimer  
 Jacques Mitchell II  
 Doris Mixer  
 Dan & Sharon Moody  
 Glenn Morgan  
 Jon & Andrea Mount  
 Boyd & Brenda Mueller  
 Carl, Carrie, Carly & Morgan Murat Jr.  
 Steven Mussman  
 Kristi Nagengast  
 Steve & Mary Nagengast  
 Gary Nelund & Angela Wasserman-Nelund  
 Jonathan Newmyer  
 Hester Newton  
 Loretta O'Brien  
 Dr. Bruce & Dr. Katrina Olson  
 Jon Oosting  
 Margaret O'Toole  
 Tom & Shirley Owen  
 Jim & Cindy Panici  
 Larry & Rhonda Patterson  
 K.P. Pelleran  
 Frank Peterson  
 Dr. Eric Peterson  
 Dr. Veronica Petty & Steve Bawks  
 Jodie Phelps  
 Richard Pospisil  
 Bruce & Jan Potter  
 Paul Price  
 Andrew & Tracy Price  
 Mary Price  
 John & Michelle Pridnia  
 Matthew & Jill Pring  
 Kevin Rahrig & Lori Houghton-Rahrig  
 Drs. Timothy & Michelle Reilly  
 Cathy Renn-Bowers  
 Thomas & Julie Reynolds  
 Bruce & Mari Rice

Mary Rigo-Burdo  
 Bambi Rinehart  
 Dan & Sarah Rinsema-Sybenga  
 Lyle & Nancy Robbins  
 Darren Rogers  
 Kenneth & Lisa Rose  
 Robert G. & Cheryl A. Ross  
 James & Patricia Rudicil  
 Dennis & Sally Rynberg  
 Zachary Saum  
 Thomas Schaub  
 John & Ruth Schrier  
 John & Deborah Schrier  
 Dave & Leigh Ann Sella  
 William Sergakis  
 John & Elaine Severson  
 William & Toni Seyferth  
 Patrick & Patricia Shafer  
 Barbara M. Shawboose  
 Thomas & Annette Shields  
 Scott & Lisa Shlaffer  
 Dustin Shunta  
 Steve & Carol Smythe  
 John & Kathleen Snider  
 Marjorie Stauffer  
 Tim & Wendy Stein  
 Teresa Stevens  
 Dr. Kevin & Therese Stone  
 Verne & Janet Sutherland  
 Donald & Leanne Swick  
 Jim & Ginny Sytsma  
 Bryce Tallant  
 Jim & Pat Teets  
 Dirk Tepp  
 Ken & Tanya Uganski  
 Amy Upham  
 Sherri VanArendonk  
 Gary VanderHeiden  
 Skyler Vaughn  
 Chad Veldhouse  
 Donata Villanueva  
 Robert Vledder  
 Dan & Kathy Vollink  
 James & Cindy Vresics  
 JD & Linda Wallace  
 Mark & Erin Walling  
 Gary Wehnes  
 Tracey Welsh  
 Michael & Sarah Westrate  
 Sue Wierengo  
 Vanessa Wilder  
 Joseph & Cynthia Wolff  
 Randal Wolffis  
 Doug & Kim Wood  
 John & Kathy Workman  
 In memory of Don and Mary B. Young  
 William Zahrt  
 Andrew Zorn  
 Glenn Zubryd & Tanya Molitor Zubryd

\* = deceased



## TOCQUEVILLE SOCIETY

### ANNUAL GIFT OF \$10,000 OR MORE

George Anacker  
 Sidney & Eunice Bush Fund  
 Bob & Donna Chandonnet  
 Pat & Julie Donahue  
 Brad & Janice Hilleary  
 Dan & Sheryl Kuznar  
 Ken & Amy Nowak  
 Patrick O'Leary  
 Mike & Kay Olthoff  
 Mary C. Payne  
 Bob & Merle Scolnik  
 Jim & Kristine Tyler  
 Van Kampen Boyer Molinari  
 Foundation  
 Winthrop Wood

## LEGACY SOCIETY

### PLANNED GIFT OF \$10,000 OR MORE

George & Josephine\* Anacker  
 Gary & Deb Bogner  
 Dr. Max & Elizabeth Busard\*  
 Sidney & Eunice Bush Fund\*  
 Bob & Donna Chandonnet  
 Pat & Julie Donahue  
 Roger & Jan Eikenberry  
 Dr. Chris & Mary Eyke  
 Mark & Christine Fazakerley  
 Ron\* & Shirley Gossett  
 Eugene Hilliard Family  
 Inez Hamilton\*  
 Brad & Janice Hilleary  
 Larry & Lari Hines  
 James & Florence Jackson Family  
 Steve & Debbie Jackson  
 Dan & Sheryl Kuznar  
 Joan Majeski  
 Hester Newton  
 Ken & Amy Nowak  
 Patrick O'Leary  
 Olsen Family Fund  
 Mike & Kay Olthoff  
 Mary Payne  
 Dr. William Schroeder  
 Bob & Merle Scolnik  
 Robert D. & C. Corcoran Tuttle Fund\*  
 Jim & Kristine Tyler  
 Stan\* & Mary Tyler Memorial Fund  
 Kimberly VanKampen  
 John & Kathy Workman  
 Winthrop Wood

\*indicates deceased

## THANK YOU TO OUR ANONYMOUS DONORS!

While United Way of the Lakeshore has made every attempt to ensure the accuracy of this list, some names may have been inadvertently missed. Please be sure to let us know if you were inaccurately omitted.

Please visit [www.unitedwaylakeshore.org/annual-report](http://www.unitedwaylakeshore.org/annual-report) for the most up-to-date listing, including our \$500-\$999 donors.





**WORK  
LEARN  
SERVE**

**RIDE** June 17 [RideMI.org](http://RideMI.org)

**GOLF** August 19 [unitedwaylakeshore.org/golf](http://unitedwaylakeshore.org/golf)

**CARE** September 8 [GetConnected.org/doc](http://GetConnected.org/doc)

**LIVE UNITED 2017**



## THANK YOU SIGNATURE SPONSORS!



31 E. Clay Avenue, Muskegon, MI 49442 – Phone: 231-722-3134 – Toll Free: 877-722-3134  
[www.unitedwaylakeshore.org](http://www.unitedwaylakeshore.org) – Facebook: UnitedWayLakeshore – Twitter: @uwlakeshore